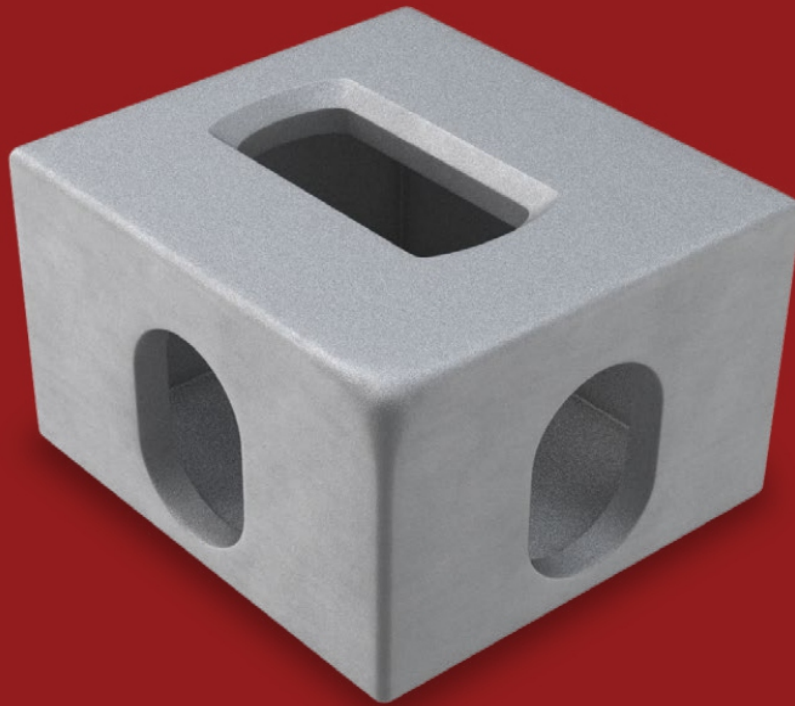


CORNER CASTING

Structural element of a shipping container
allowing it to be connected to other containers
both horizontally and vertically.

383 CORNER CASTING - TWIST LOCK

384 CORNER CASTING - CORNER CASTING



CORNER CASTING



MCNTL-001
TWIST LOCK

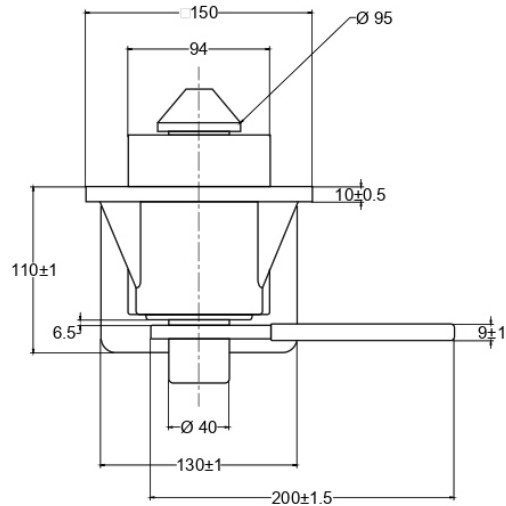


DESCRIPTION

Twist locks are devices that are primarily incorporated to join and lock containers vertically and/or horizontally. As a result, these connection items became very vital to safely securing containers for transportation and retrofitting purposes.

Additionally, twist-locks were standardly designed to secure containers while on marine, rail, or land transport. They make certain that containers stacked on top of each other are secured to anchor points. Thus, twistlocks prevent accidental dislodging.

SPECIFICATIONS



MCNTL-001



CCBR / CCBL / CCTR / CCTL
CORNER CASTING

MATERIAL
Cat Steel Aldur

WEIGHT
11.50kg

DESCRIPTION

PART NUMBERS
CCBR - Bottom Right
CCBL - Bottom Left
CCTR - Top Right
CCTL - Top Left

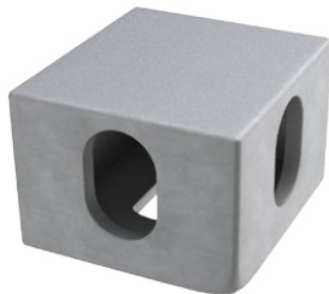
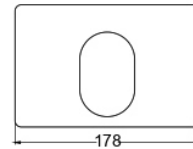
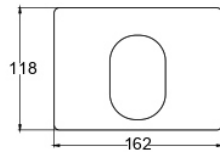
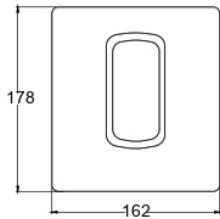
Corner Castings are the generic items used to allow connection of shipping containers to other objects.

- Shipping Container ISO Corner Castings
- High quality Cat Steel Aldur s45.
- Shotblasted and machined on six sides.
- Manufactured in accordance with ISO 1161

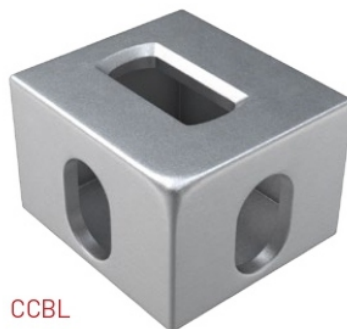
PLEASE NOTE

You can substitute CCBR with CCTL and vice versa with all the corner cast blocks. Opposite hand and opposite corner will match.

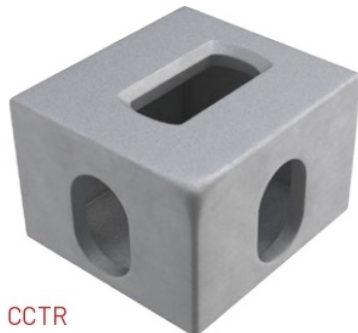
SPECIFICATIONS



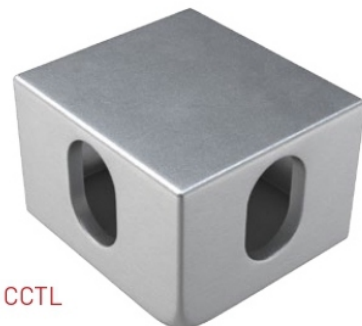
CCBR



CCBL



CCTR



CCTL