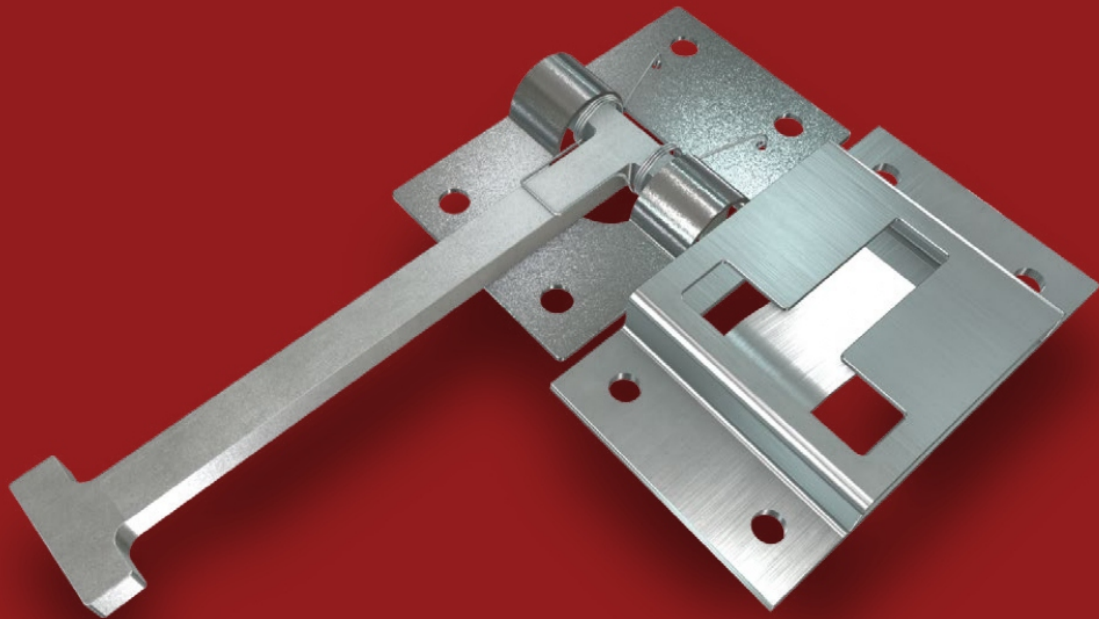


DOOR RETAINERS

Commonly used on trucks, trailers, caravans, and camper trailers to hold doors open amongst many other applications.

294 DOOR RETAINERS - DOOR HOLD

295 DOOR RETAINERS - DOOR RETAINER



DOOR RETAINER Z/P
60090/60091



2132
DOOR HOLD

MATERIAL
Steel Spring, Cast Steel

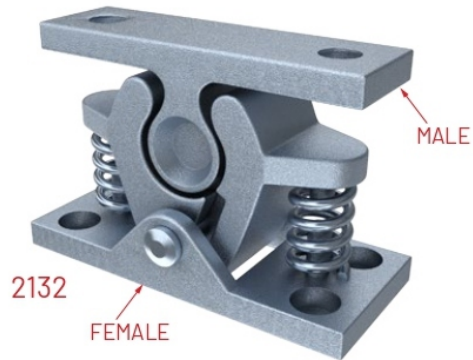
FINISH
Zinc Plated

TYPE
Claw Catch Door Retainer

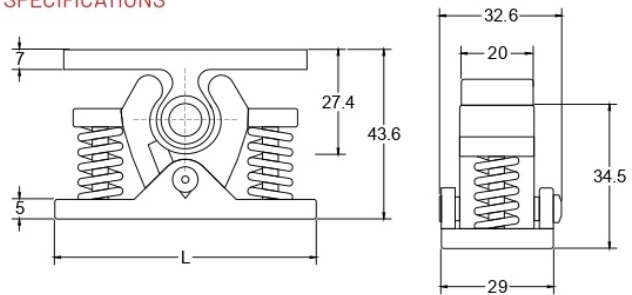
DESCRIPTION

Female: L66 x H34.5 x W29mm
Mounting holes 4 x 5.00mm Ø
Springs 2

Male: L61 x H27.4 x W20mm
Mounting holes 2 x 6.00mm Ø



SPECIFICATIONS



2132N
DOOR HOLD

MATERIAL
Nylon

TYPE
Claw Catch Door Retainer

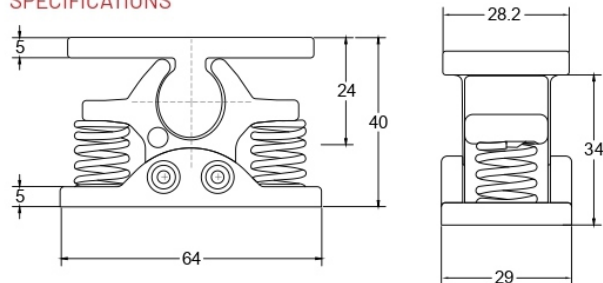
DESCRIPTION

Female: L64 x H34 x W29mm
Mounting holes 4 x Ø4.5mm
Springs 2

Male: L64 x H24 x W28.2mm
Mounting holes 4
Slotted Adjustable
5.00 x 9.7mm



SPECIFICATIONS

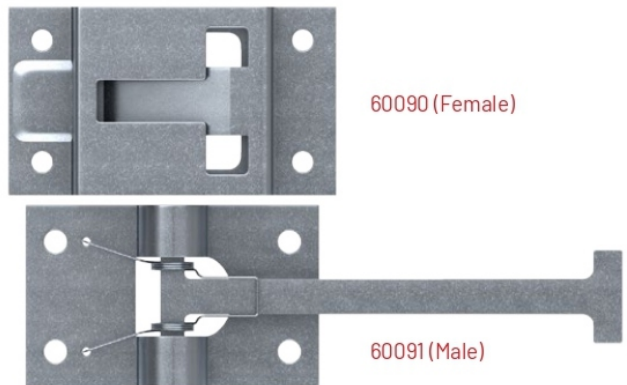


60090/60091
60090S/60091S
 DOOR RETAINER

MATERIAL
Zinc Plated Steel / Stainless Steel

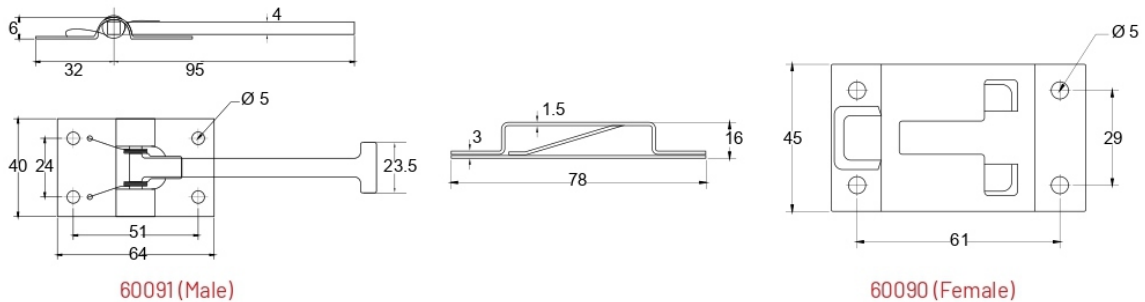
DESCRIPTION

Spring - Door Retainer
 Sold as a set.
 (Rubber Backing Gaskets available)
 #60092R - Male
 #60093R - Female

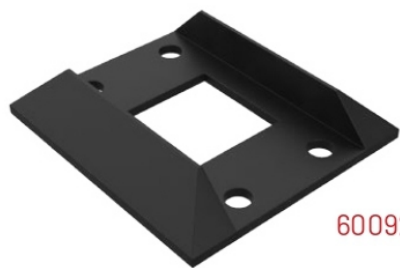


60090/60091

SPECIFICATIONS



RUBBER PROFILES

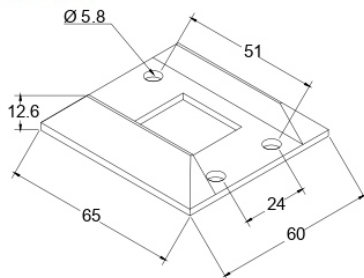


60092R

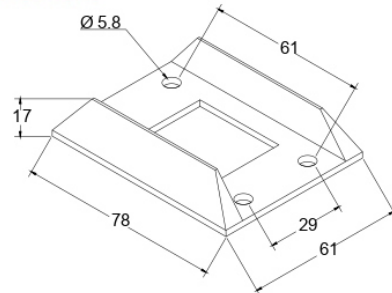


60093R

SPECIFICATIONS



SPECIFICATIONS

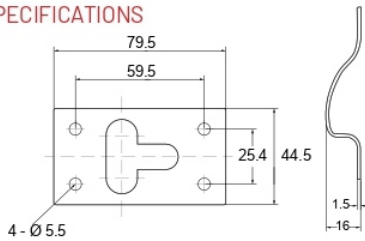


60092S/60093S
DOOR RETAINER

MATERIAL
304 Stainless Steel

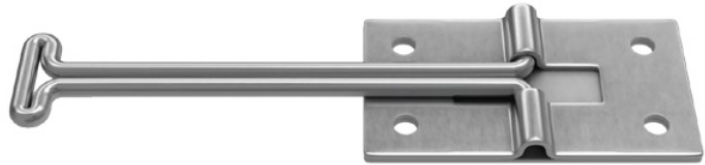


60092S
SPECIFICATIONS

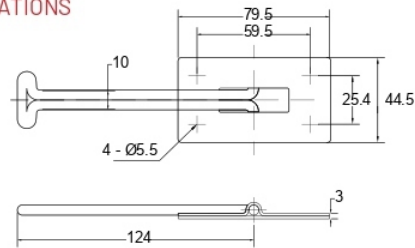


FINISH
Polished

DESCRIPTION
Door retainers are commonly used on trucks or food vans. Backing Plates available to suit.



60093S
SPECIFICATIONS



550/551
550/551L
DOOR RETAINER

MATERIAL
Cast Steel Arm - Zinc Plated
Mild Steel - Zinc plated

DESCRIPTION
Door Hold Long Hook And Retainer Plate. Sold as a set.

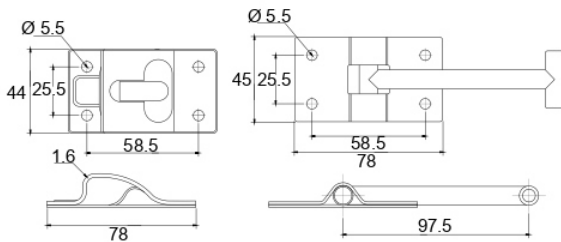
550/551



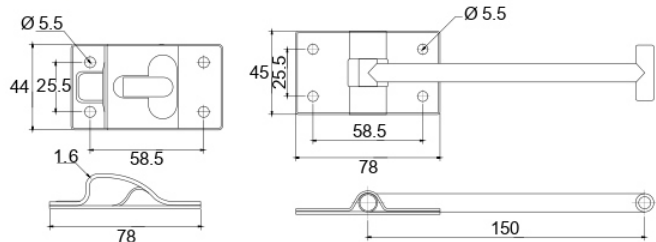
550/551L



SPECIFICATIONS



SPECIFICATIONS



666/001
DOOR RETAINER



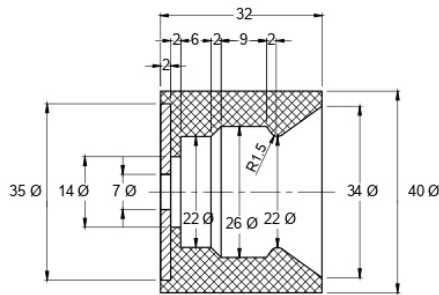
MATERIAL

**Black Rubber with Zinc Plated
Steel Washer Base**

DESCRIPTION

Socket Only - Female Part
Moulded steel fixing plate

SPECIFICATIONS



666/001

666/002
DOOR RETAINER



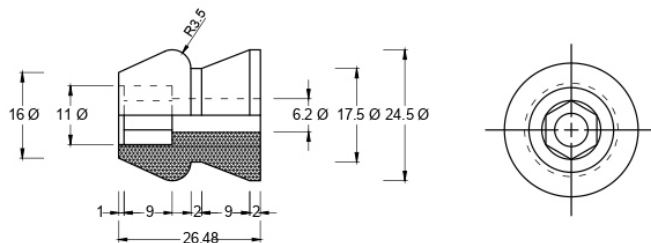
MATERIAL

Black Heavy Duty Polypropylene

DESCRIPTION

Spear Only - Male Part to 666/001
Supplied with a recessed Hexagon to take M6 bolt.

SPECIFICATIONS



666/002