

DOOR SEALS

Supplied into the Truck Body industry.
Can be used in a variety of applications.
PVC rigid body with flexible rubber sealing legs.
Various sizes and profiles available.

301 DOOR SEAL RUBBERS



DUROMETER GREY
20MM MCNPVG30



UMF
UNIVERSAL METAL FABRICATION
TRUCK BODIES, RACE CAR TRANSPORTERS & GENERAL

 **0435273742**

Visit us at : www.universalmetalfabrication.com.au

MCNPVG25 / MCNPVG30 / MCNPVG40

DOOR SEAL RUBBER



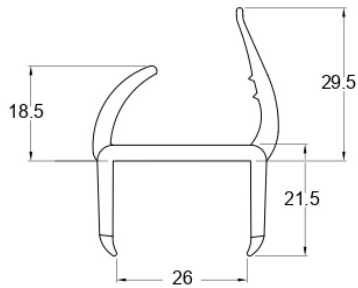
MATERIAL

PVC

DESCRIPTION

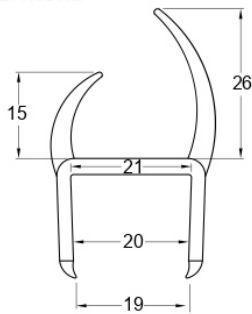
Durometer Grey door seal. This product is a grey door seal with a rigid PVC body that is often used when a seal is needed between two door edges on UTEs, trucks and buses. It creates a water tight seal and firm contact when screwed or glued into place on the edge of the doors.

SPECIFICATIONS



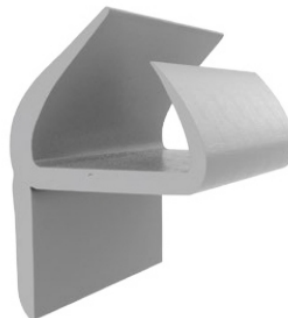
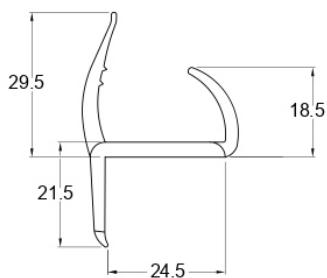
MCNPVG25
5 METRE LENGTHS

SPECIFICATIONS



MCNPVG30
5 METRE LENGTHS

SPECIFICATIONS



MCNPVG40
5 METRE LENGTHS

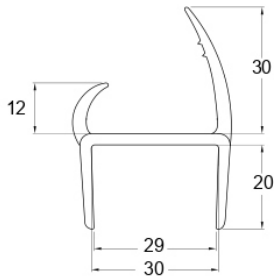
MCNPVG50 / MCNPVG44B
DOOR SEAL RUBBER

MATERIAL
PVC

DESCRIPTION

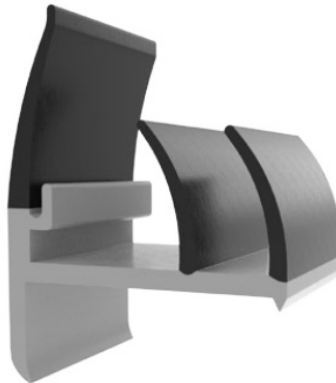
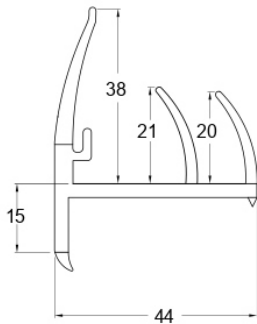
Durometer Grey door seal.

SPECIFICATIONS



MCNPVG50
5 METRE LENGTHS

SPECIFICATIONS



MCNPVG44B
(Black Rubber Legs)
3.6 METRE LENGTHS

MCNPVG55 / MCNPVG85

DOOR SEAL RUBBER



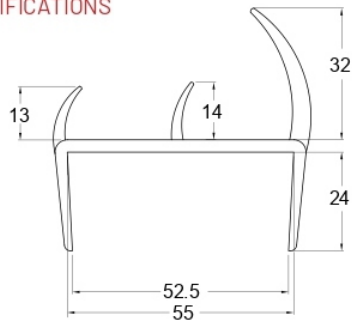
MATERIAL

PVC

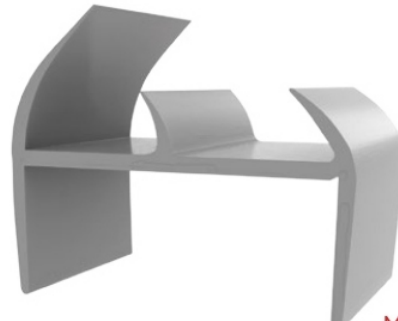
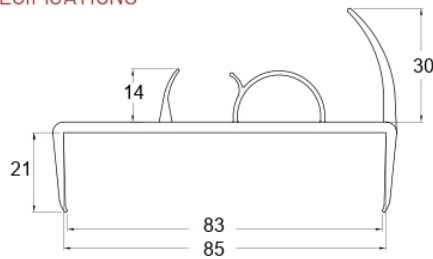
DESCRIPTION

Durometer Grey door seal.

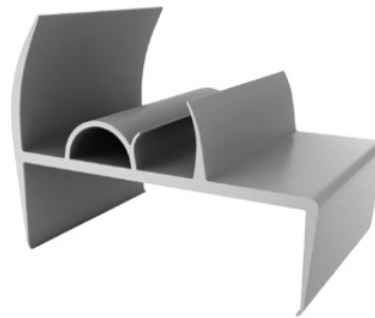
SPECIFICATIONS



SPECIFICATIONS



MCNPVG55
4.2 METRE LENGTHS



MCNPVG85
4.2 METRE LENGTHS

PVGT-100

DOOR SEAL RUBBER



MATERIAL

RUBBER

COLOUR

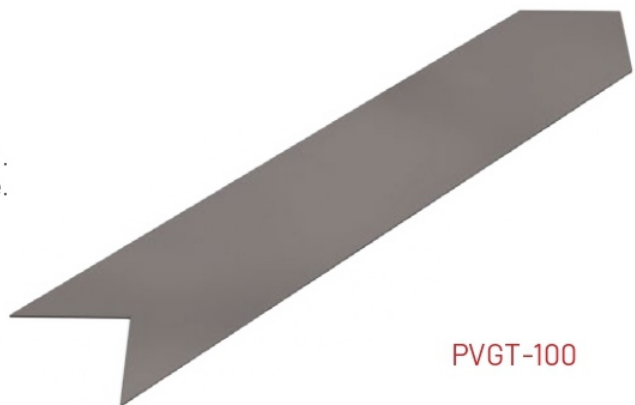
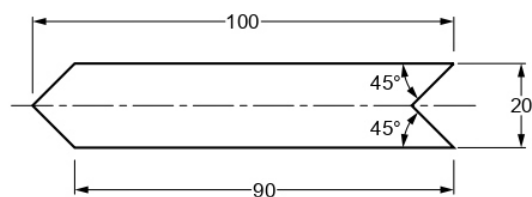
GREY

DESCRIPTION

Grey corner tab to cover the mitre edges of the door seal.
(Use either a sealant adhesive or super glue to adhere.
Product available.)

Usually 4 tabs per door required.

SPECIFICATIONS



PVGT-100