

HANDLES

Great selection of different handles styles and finish. Suitable for a large range of applications.

-
- | | | | |
|-----|--------------------------------------|-----|-------------------------------|
| 154 | HANDLES - LEVER | 162 | HANDLES - D-HANDLE |
| 156 | HANDLES - T - HANDLE | 162 | HANDLES - GRAB / PULL HANDLE |
| 158 | HANDLES - SWING HANDLE | 166 | HANDLES - GRAB RAILS |
| 160 | HANDLES - SINGLE POINT CAM | 167 | HANDLES - RECESSED FLUSH PULL |
| 161 | HANDLES - RODS , GUIDES AND ADAPTORS | 168 | HANDLES - CHEST HANDLE |
| | | 171 | HANDLES - INTERNAL |



T/HANDLE



* All SOUTHCO products shown can be found at www.southco.com
Full range of products, drawings and technical details are readily accessible.

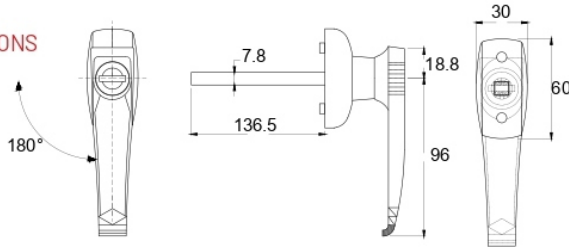
60052
LEVER HANDLE

DESCRIPTION

Rear Fix - 38mm Centres.
180° Rotation 8mm□Square Drive
Other key options available on request.

Part Number	Description
60052 CCW - 92268	Keyed 92268 Rotation Counter Clockwise
60052 CW - 92268	Keyed 92268 Rotation Clockwise

SPECIFICATIONS



60052

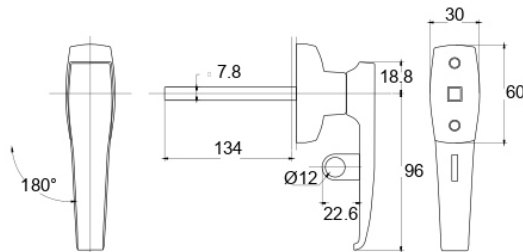
60036
LEVER HANDLE

DESCRIPTION

Rear Fix - 38mm centres,
180° Rotation 8mm□Square Drive with
Padlockable Hasp Chrome Plated
Optional 304 Grade Stainless Steel Hasp. (See page 142)

Part Number	Description
60036 CCW	Rotation Counter Clockwise
60036 CW	Rotation Clockwise

SPECIFICATIONS



60036

LHPB-LSS / LHPB-RSS
PADLOCKABLE BRACKET SS
LEVER HANDLE



DESCRIPTION

LHPB-LSS

Left Hand Clockwise
 304 Grade SS Padlockable
 Bracket to suit **60036CW**

LHPB-RSS

Right Hand Counter Clockwise
 304 Grade SS Padlockable
 Bracket to suit **6003CCW**

LHPB-LSS



Optional Stainless Steel
 (Chrome Plated Bracket
 Supplied as Standard with handle)

LHPB-RSS



LHP316
LEVER HANDLE



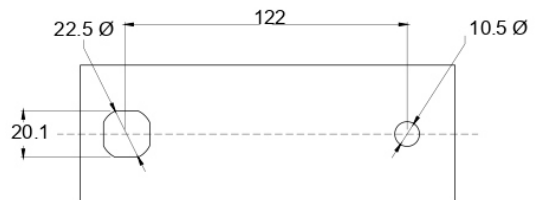
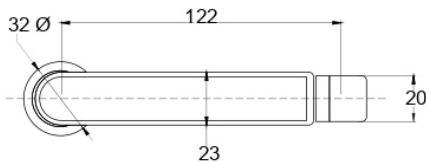
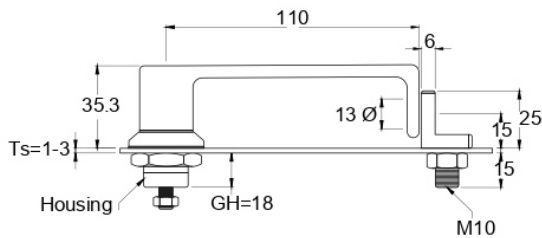
DESCRIPTION

316 Grade Stainless steel
 Padlockable Lever Handle.
 Separate locking tab.
 90° rotation left or right
 28mm cam height.
 110mm lever.
 Rear fix.



LHP316

SPECIFICATIONS



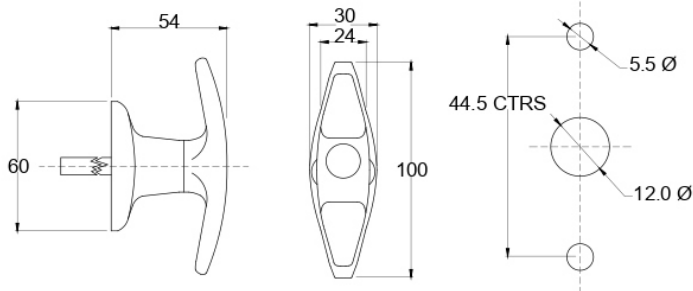
60006 / MS314-1
T-HANDLE

DESCRIPTION

T-Handle Chrome Plated Zinc Alloy
Rear Fix - 44.5mm centres / 38mm centres
90° Rotation
8mm □ Square Drive

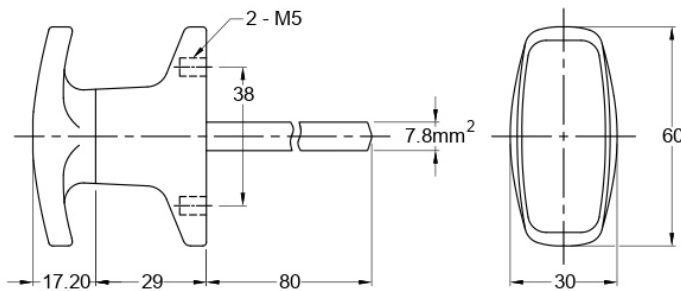
Part Number	Description
60006CCW - 92268	Rotation Counter Clockwise - Keyed 92268
60006CW - 92268	Rotation Clockwise - Keyed 92268
MS314-1 - 92268 (SMALL "T")	Rear Fix - 38mm centres 90° Rotation, 8mm □ Square Drive Keyed 92268 Non Locking Available on request.

SPECIFICATIONS FOR 60006



60006

SPECIFICATIONS FOR MS314-1



MS314-1

60007SS316

T HANDLE

MATERIAL

316 Grade Stainless

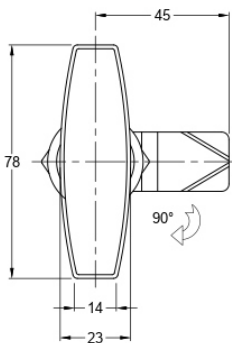
FINISH

Matte

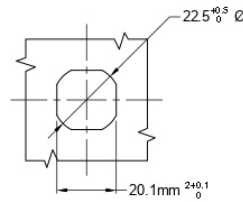
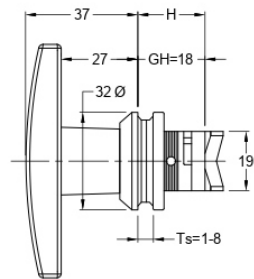
DESCRIPTION

316 grade stainless steel.
Non-locking.
Quarter turn - 90 degree.
78mm handle.
IP65 rated.
Cam supplied separately.
Standard cam height at 18mm.

SPECIFICATIONS



Non-locking



Panel cutout



60007SS316

61026HANDLE

T HANDLE

MATERIAL

Zinc Die Cast body Zinc Plate Pressed Handle

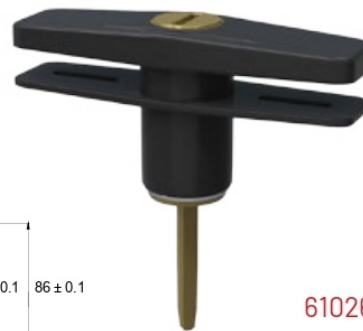
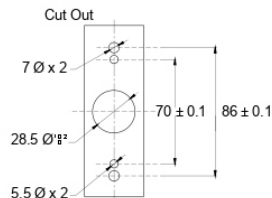
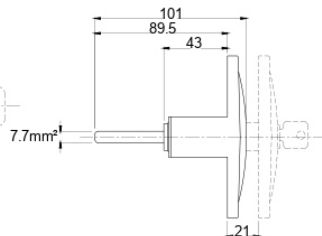
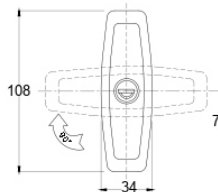
FINISH

Black Powdercoat

DESCRIPTION

Flush Mounted Pop-Up. Low Profile. Push button to open. Push down to close. Key locking - Shuttered Keyway. Supplied random keyed only. Single or multiple points locking cams - to be ordered separately. Mainly used on canopies or under tray sliding drawers.

SPECIFICATIONS



61026HANDLE